



# Time Sensitive Systems of Care:

How Collaboration and

Participation Make It All Possible

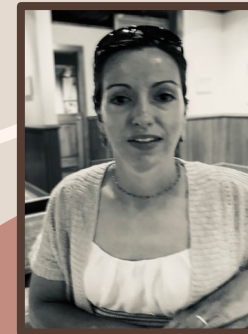
# Challenges, Learnings & Pearls from Rural Trauma Managers



Heidi O'Malley, BSN, RN  
Munson East Region  
Trauma Manager  
MCA Coordinator



Valerie Gingrich, BSN, RN  
Munson Medical Center  
Trauma Program Manager



Sarah Hughes, BSN, RN  
Oaklawn Hospital  
Director Emergency  
Preparedness, Trauma and Stroke  
& Injury Prevention Specialist



# Disclaimers

The information presented today is provided for general information and educational purposes only and is not a substitute for professional advice. Accordingly, before taking any actions based upon such information, we encourage you to consult with the appropriate professionals. We do not provide any kind of medical/health advice. The use or reliance of any information contained is solely at your own risk.



# Objectives

**1**

Understand what Systems of Care encompasses in rural facilities

---

**2**

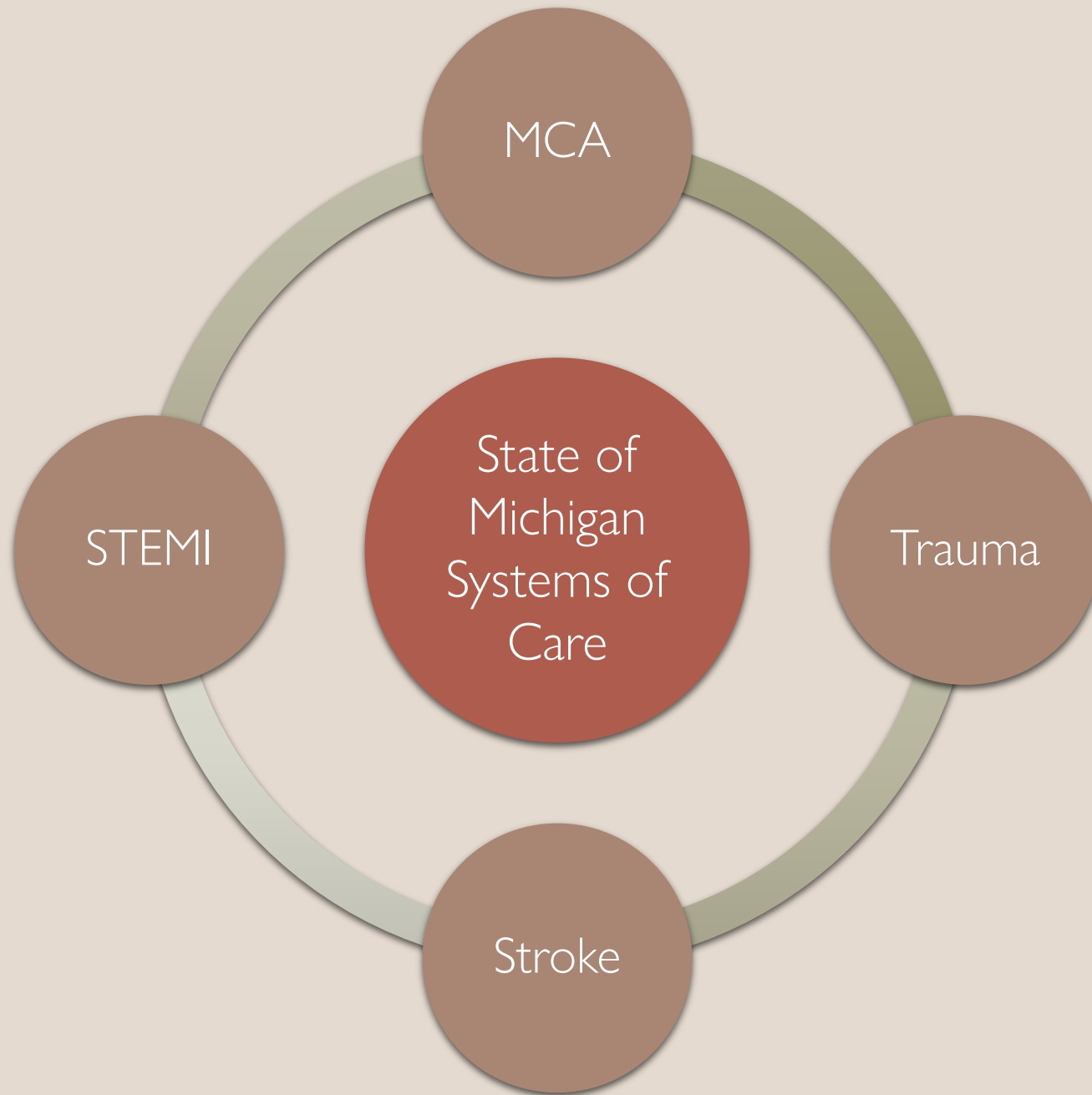
Learn strategies to make your System of Care program successful

---

**3**

Gain knowledge of the various roles and responsibilities as a Program Manager

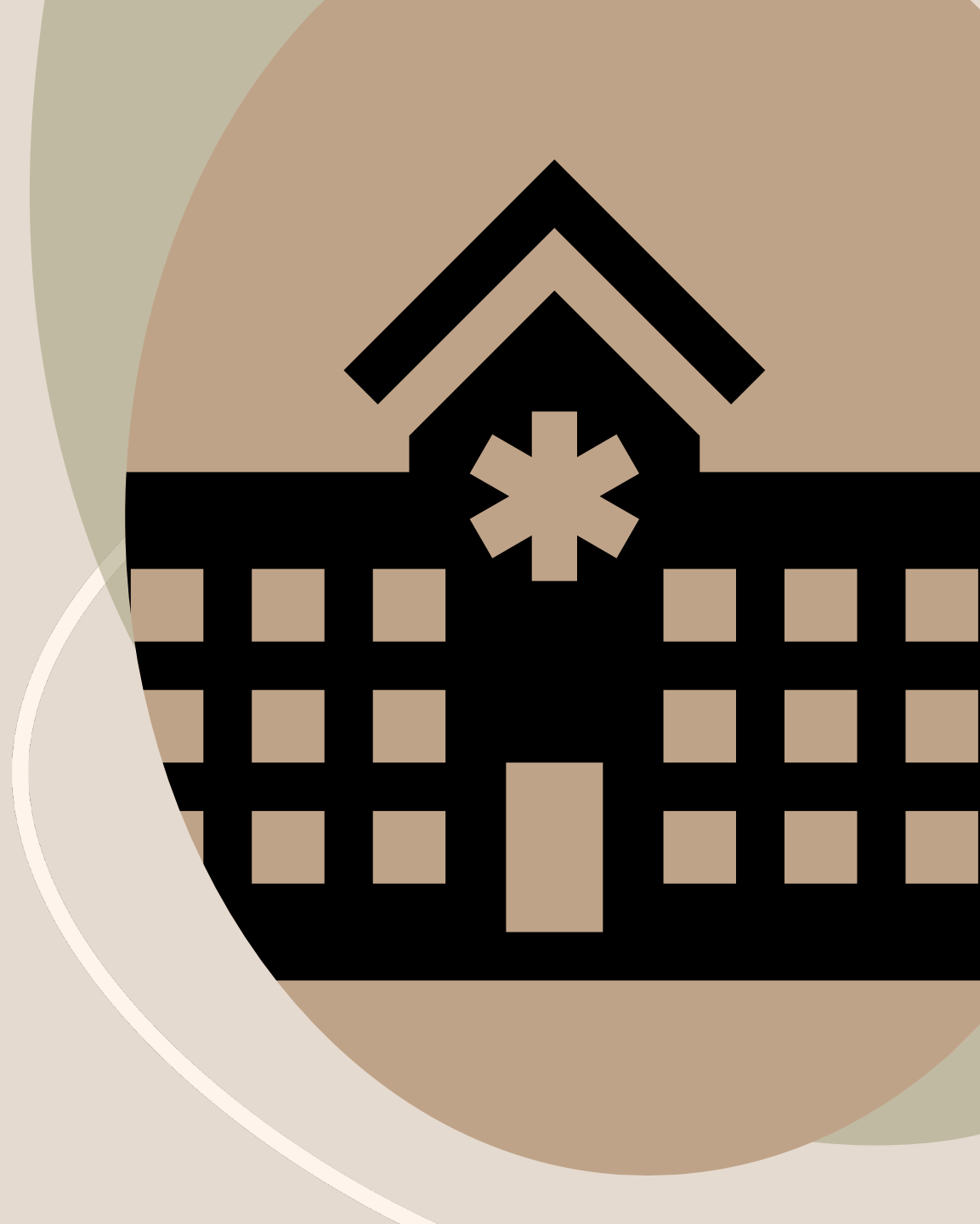
---





# Coordination and Collaboration

Systems of Care -  
More Than Just the  
Emergency Department





Trauma Program Experience  
translates to  
Stroke & STEMI Systems of Care



# Program Manager Responsibilities



Program  
Manager



# Program Manager Responsibilities





# Multiple Facilities or Programs - Pros & Cons



# Advocate For Your Program



“I’ve got 99 problems and  
I’m doing PI on all of them!”

Explain Your “Why”





Remember the Big Picture



Remember the Big Picture

We Are Advocates



# Thank You!

Heidi O'Malley

[homalley@mhc.net](mailto:homalley@mhc.net)

Valerie Gingrich

[vgingrich@mhc.net](mailto:vgingrich@mhc.net)

Sarah Hughes

[shughes@oaklawnhospital.com](mailto:shughes@oaklawnhospital.com)



# References

Network, R. 7. (2024-2026). Region 7 Network Application. Retrieved from Michigan.gov: <https://www.michigan.gov/mdhhs/-/media/Project/Websites/mdhhs/Trauma/Region-Applications/2024-R7-Application-Draft-Final.pdf?rev=fe3ccac0d14b472b86681bdb92b6b81e>

Nurses, S. o. (2021). Rural Trauma Outcomes & Performance Improvement Course. Course Manual (pp. 5-220). Frankfort, KY: Society of Trauma Nurses.

Services, M. D. (2015, October 15). Michigan Criteria for Trauma Facility Designation. Retrieved from Michigan.gov: [https://www.michigan.gov/mdhhs/-/media/Project/Websites/mdhhs/Folder2/Folder73/Folder1/Folder173/Michigan\\_Criteria\\_FINAL8614.pdf?rev=b327658ef43849d0a707d6cd74e7822c&hash=D270FB9D44E4C6C6102CC975C05CED8A](https://www.michigan.gov/mdhhs/-/media/Project/Websites/mdhhs/Folder2/Folder73/Folder1/Folder173/Michigan_Criteria_FINAL8614.pdf?rev=b327658ef43849d0a707d6cd74e7822c&hash=D270FB9D44E4C6C6102CC975C05CED8A)

Services, M. D. (2026). State of Michigan Level III Trauma Facility Criteria. Retrieved from Michigan.gov 3/2/2026: <https://www.michigan.gov/mdhhs/-/media/Project/Websites/mdhhs/Trauma/Designation/Level-III-Criteria-Full-Document-Final-1262026---FINAL.pdf?rev=559ec2196314416382b9f917b79f276e&hash=37C03303BE3A86133B1BF7AB5F635043>

Services, M. D. (2026). State of Michigan Level IV Trauma Facility Criteria. Retrieved from Michigan.gov 3/2/2026: <https://www.michigan.gov/mdhhs/-/media/Project/Websites/mdhhs/Trauma/Designation/Level-IV-Full-Criteria-Document-12626---FINAL.pdf?rev=7614336d86cc432ca3842be23a65f7ce&hash=B74F608B7864C239BFF19686D759A9E7>

Surgeons, A. C. (2023). Resources for Optimal Care of the Injured Patient. 2022 Standards, pp. 1-150.